

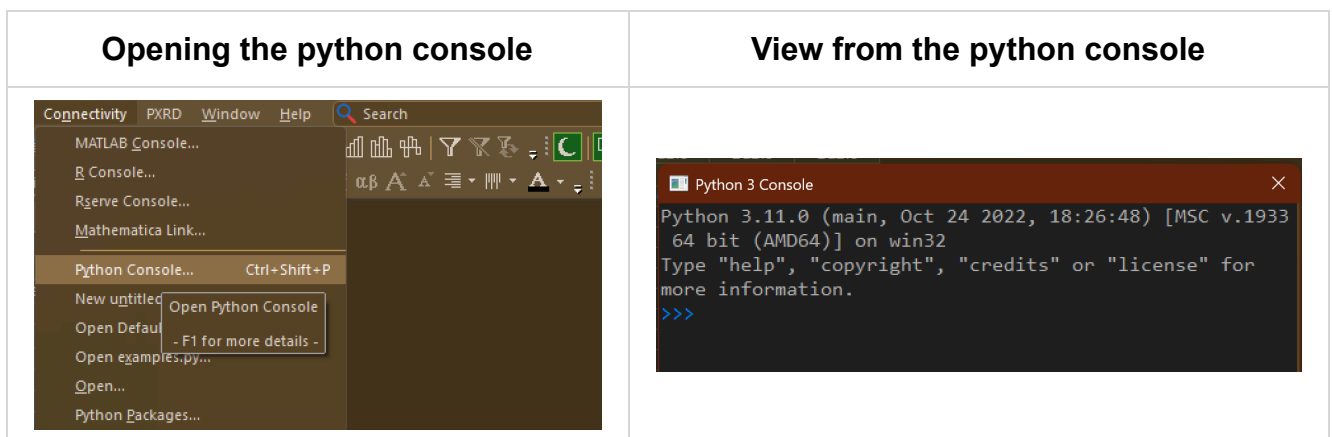
To Update the Plugin:

Follow the same installation instructions below. Most required python packages will already be installed, and the necessary files will automatically be overwritten.

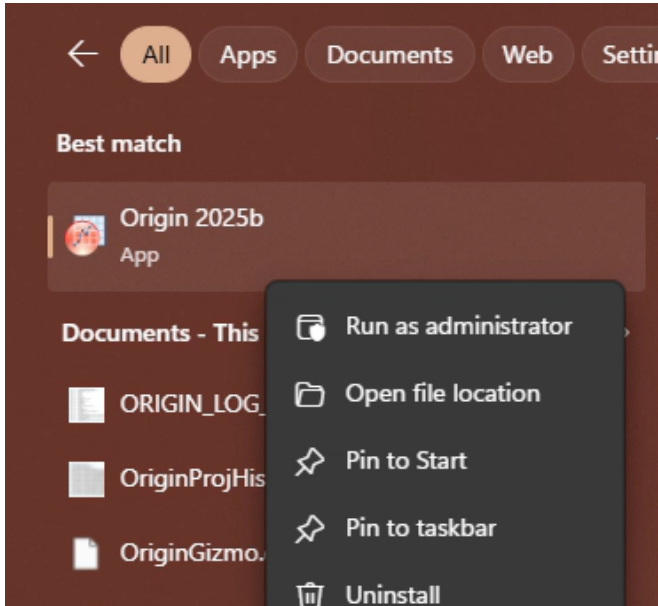
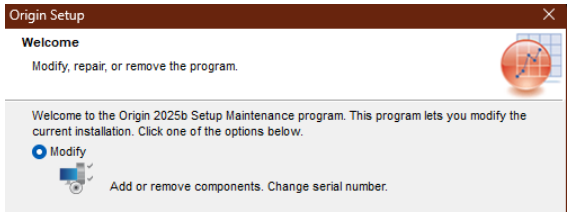
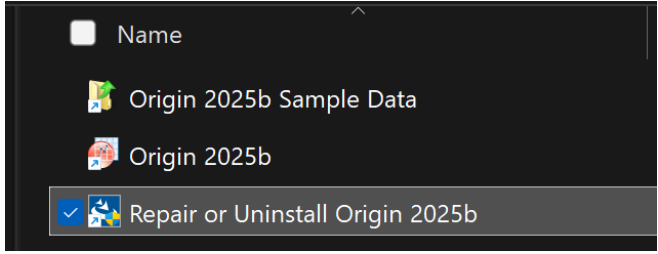
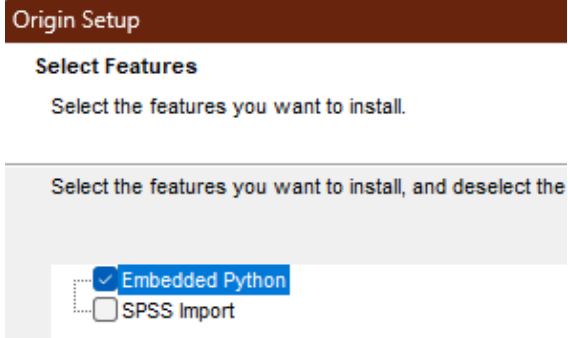
Installation Instructions

Before Installing:

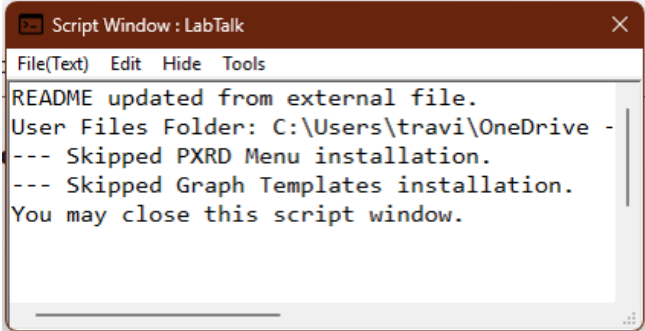
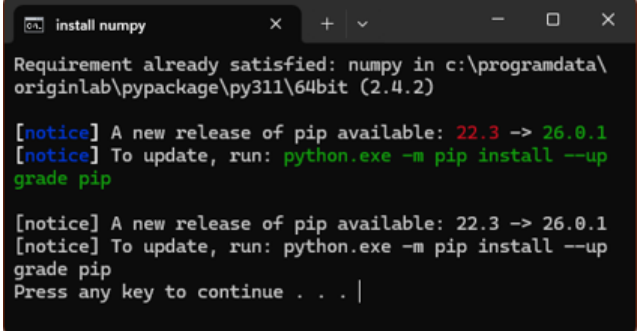
- Identify your version of Origin.
 - Automatic install is confirmed for 2025 and 2026 releases.
 - Manual Install is required for 2022-2024 releases
 - This plugin is not compatible with Origin 2021 or earlier
- Make sure embedded python is installed.
 - Double check in Origin by navigating to Connectivity > Python Console...



- If necessary, add the embedded python to your installation by right-clicking in the start menu > Open File Location, and running the install repair tool to modify the installation

Find the install repair tool	Modify the installation
	
	

- Other Windows to Recognize:

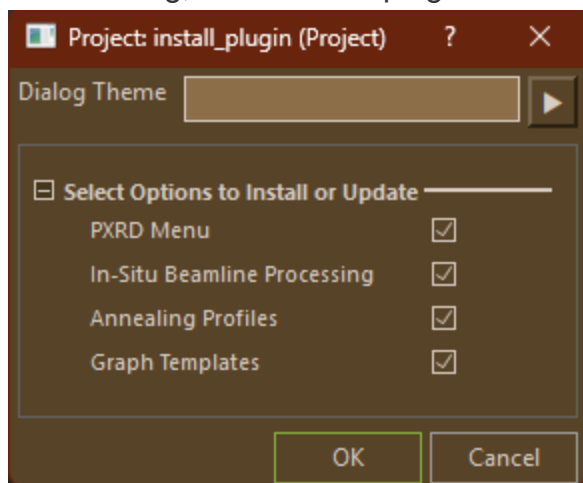
Labtalk Script Window	CMD Window
<p>This window is used to run Origin Labtalk commands.</p> <p>It is also used during manual installation to manually request python packages.</p>	<p>This window will be opened by Origin to install any requested python packages</p>
	

Automatic Install (Origin 2025 or later):

[Click Here to Download the most recent installer](#)

1. Download and run the installer at the link above. You may need to tell your browser to trust the file. Once run, it will open the installation project inside Origin.

1. In the dialog, select which plugin features you want to install, then select OK.

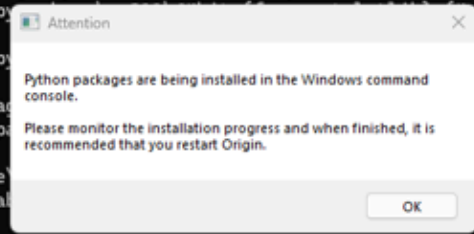


1. Origin will open an embedded command prompt window to install necessary python packages. This may take longer than 10 minutes, depending on processing speed and internet connection.

```
install bibtextparser matplotlib x + v
Requirement already satisfied: cycler>=0.10 in c:\programdata\originlab\pypackage\py311\64bit (from matplotlib) (0.12.1)
Requirement already satisfied: fonttools>=4.22.0 in c:\programdata\originlab\pypackage\py311\64bit (from matplotlib) (4.22.0)
Requirement already satisfied: kiwisolver>=1.3.1 in c:\programdata\originlab\pypackage\py311\64bit (from matplotlib) (1.4.9)
Requirement already satisfied: numpy>=1.23 in c:\programdata\originlab\pypackage\py311\64bit (from matplotlib) (1.23.0)
Requirement already satisfied: packaging>=20.0 in c:\programdata\originlab\pypackage\py311\64bit (from matplotlib) (20.9)
Requirement already satisfied: pillow>=8 in c:\programdata\originlab\pypackage\py311\64bit (from matplotlib) (9.0.1)
Requirement already satisfied: python-dateutil>=2.7 in c:\programdata\originlab\pypackage\py311\64bit (from matplotlib) (2.9.0.post0)
Requirement already satisfied: six>=1.5 in c:\programdata\originlab\pypackage\py311\64bit (from python-dateutil>=2.7->matplotlib) (1.17.0)
Installing collected packages: bibtextparser, matplotlib
  DEPRECATION: bibtextparser is being installed using the legacy 'setup.py install' method, because it does not have a 'pyproject.toml' and the 'wheel' package is not installed. pip 23.1 will enforce this behaviour change. A possible replacement is to enable the '--use-pep517' option. Discussion can be found at https://github.com/pypa/pip/issues/8559
  Running setup.py install for bibtextparser ... done
Successfully installed bibtextparser-1.4.4 matplotlib-3.10.8
WARNING: Target directory C:\ProgramData\OriginLab\PyPackage\Py311\64bit\mpl_toolkits already exists. Specify --upgrade to force replacement.
WARNING: Target directory C:\ProgramData\OriginLab\PyPackage\Py311\64bit\__pycache__ already exists. Specify --upgrade to force replacement.

[notice] A new release of pip available: 22.3 -> 26.0.1
[notice] To update, run: python.exe -m pip install --upgrade pip

[notice] A new release of pip available: 22.3 -> 26.0.1
[notice] To update, run: python.exe -m pip install --upgrade pip
Press any key to continue . . . |
```

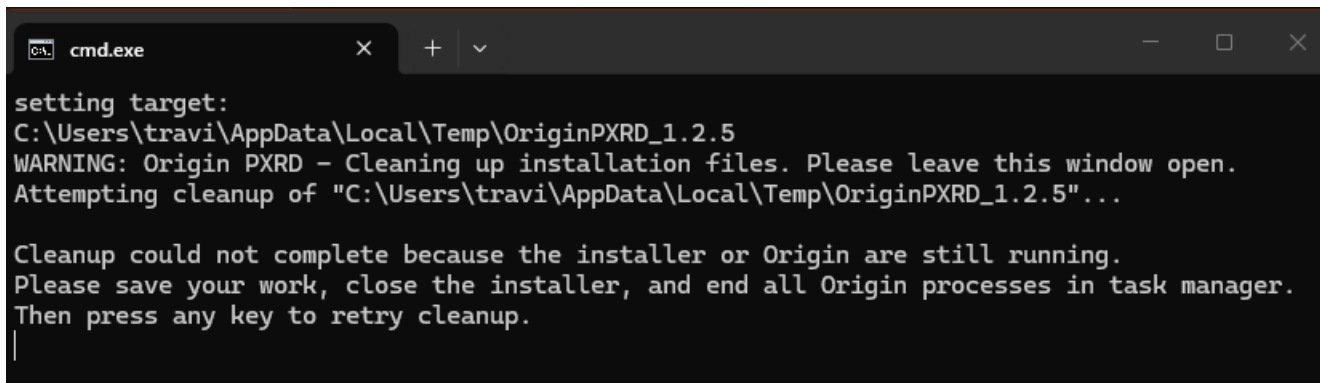


- While waiting on package install, check on the Labtalk window for confirmation or error messages

```
Script Window : LabTalk
File(Text) Edit Hide Tools
README updated from external file.
User Files Folder: C:\Users\travi\OneDrive - Iowa State University\Documents
Wrote: C:\Users\travi\OneDrive - Iowa State University\Documents
Wrote: C:\Users\travi\OneDrive - Iowa State University\Documents
Wrote: C:\Users\travi\OneDrive - Iowa State University\Documents
Wrote: C:\Users\travi\OneDrive - Iowa State University\Documents
Wrote: C:\Users\travi\OneDrive - Iowa State University\Documents
Wrote: C:\Users\travi\OneDrive - Iowa State University\Documents
Wrote: C:\Users\travi\OneDrive - Iowa State University\Documents
--- PXRD Menu successfully installed!
Wrote: C:\Users\travi\OneDrive - Iowa State University\Documents
Wrote: C:\Users\travi\OneDrive - Iowa State University\Documents
--- Graph Templates successfully installed!
You may close this script window.
```

1. After the python packages have been installed (CMD line should end with "Press any key to continue..."), save the Origin project (It will be deleted shortly, but Origin will not release it for deletion until it's saved.) and close all copies of Origin.

1. If using the automatic installer, two new CMD windows should appear.
 - i. One is another python package installer that double-checks that the correct version of `cif2xrd` was installed. This window can be closed as soon as it's done.
 - ii. Another CMD window should appear that will clean up the installation files from their temporary directory. **Do not close this window, it will close itself after cleaning up**
- The cleanup window may ask you to close all copies of Origin from task manager. This is because Origin keeps recent files open in the background and prevents their deletion, including some installation files.



```
cmd.exe
setting target:
C:\Users\travi\AppData\Local\Temp\OriginPXR_1.2.5
WARNING: Origin PXR - Cleaning up installation files. Please leave this window open.
Attempting cleanup of "C:\Users\travi\AppData\Local\Temp\OriginPXR_1.2.5"...

Cleanup could not complete because the installer or Origin are still running.
Please save your work, close the installer, and end all Origin processes in task manager.
Then press any key to retry cleanup.
```

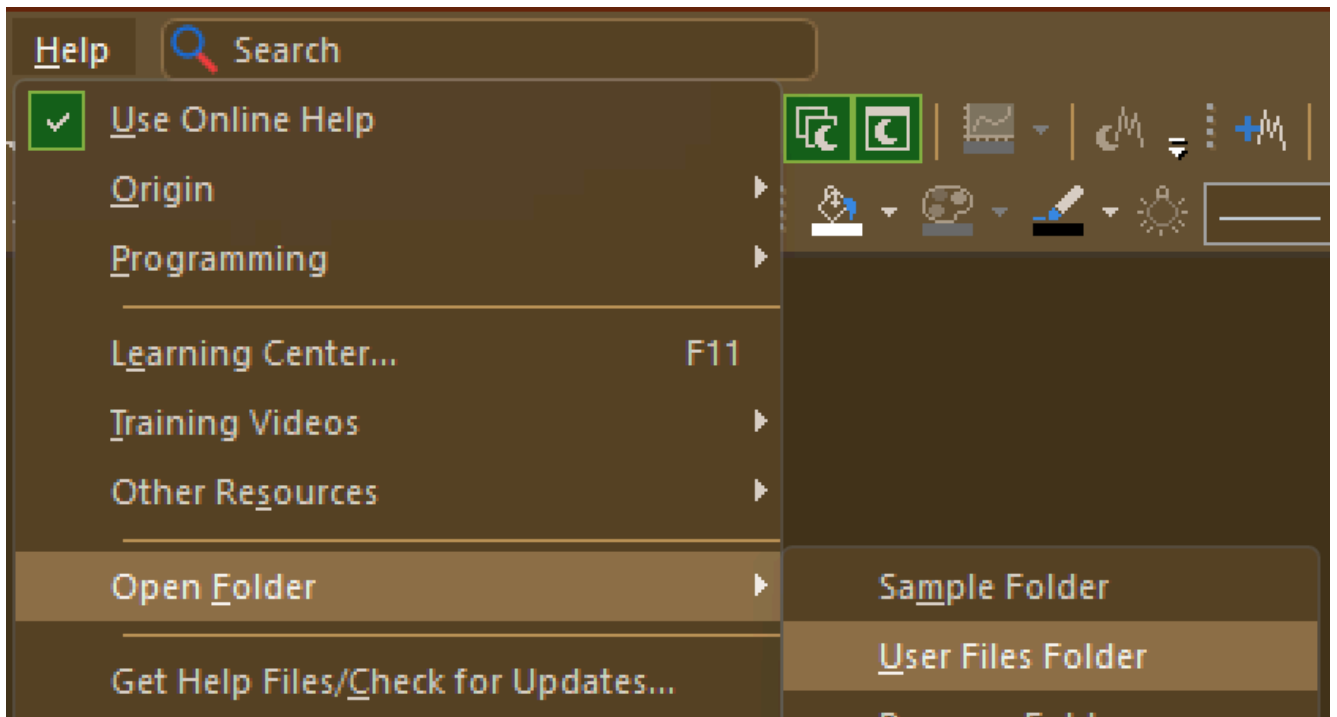
1. Review the [instructions for use](#) for further guidance.

Manual Install (Origin 2022-2024)

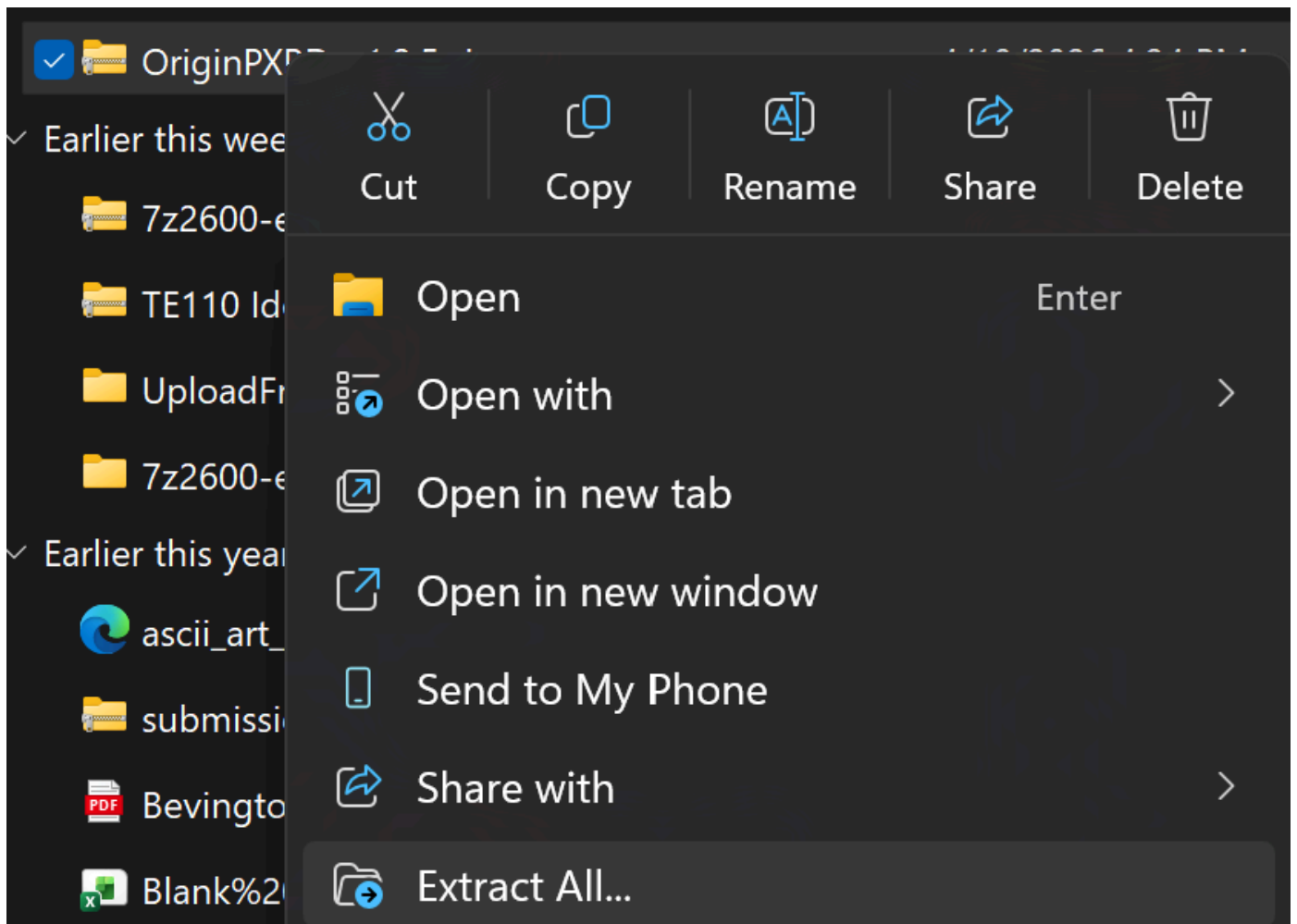
Disclaimer: This plugin should work as far back as Origin 2022. However, it has only been tested for 2024 or later.

[Click Here to Download the most recent zip package](#)

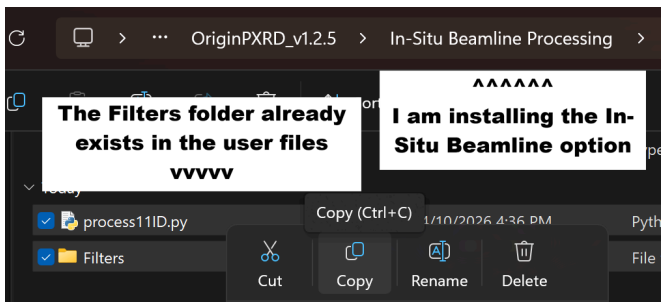
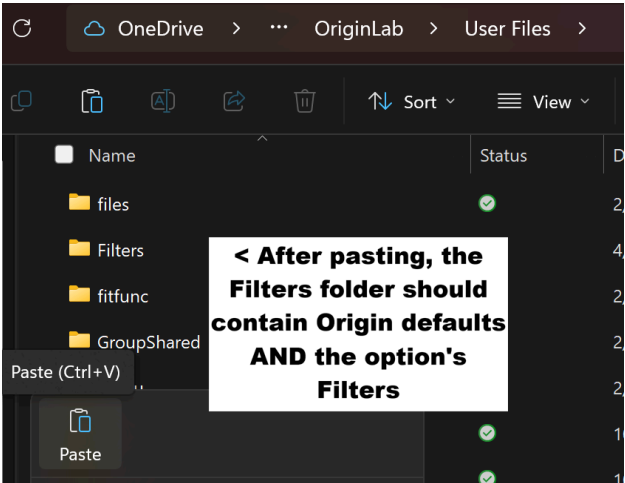
1. Locate your Origin User Files Folder.
 - In Origin 2024 or later, your user files folder can be found from inside Origin: Help > Open Folder > User Files Folder



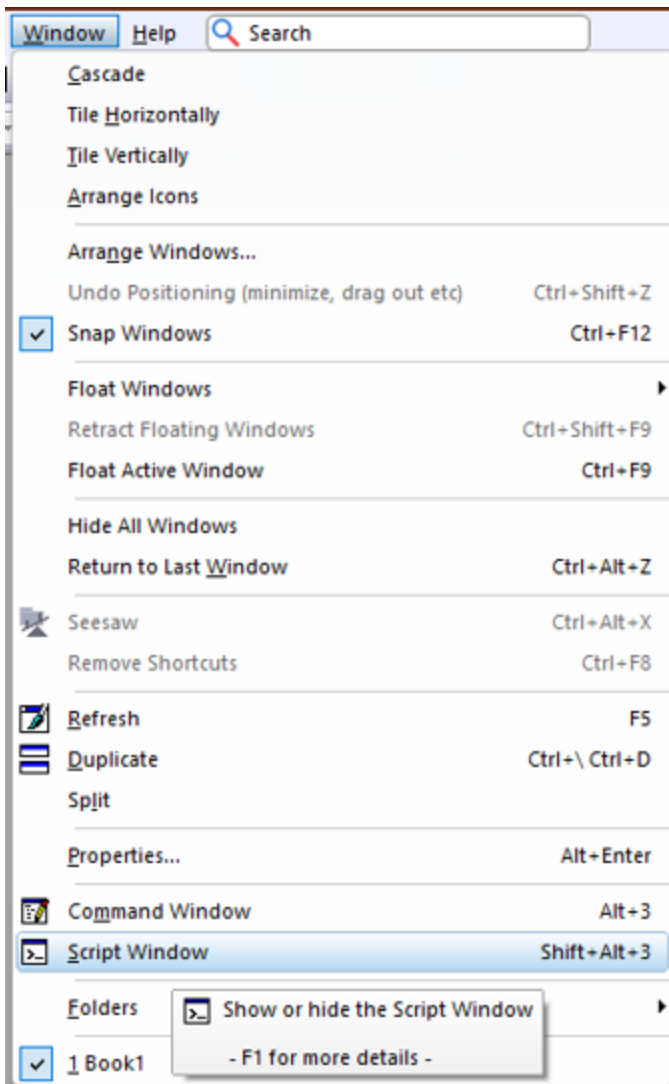
1. Download the most recent zip package at the link above and extract it to an easy-to-find location



- For each option that you want to install, copy the entire contents of the corresponding option folder into the user files folder.
 - For example: If you want to install the PXRD Menu, open the PXRD Menu folder and copy [cifImp.py](#), [cifPicker.py](#), PXRD.omc, etc... directly into the user file folder
 - Some option folders contain additional folders inside them. The folder itself needs to be put inside the user files folder, then the files inside stay inside that folder. If the folder already exists in the user files folder, make sure the new files are inside that folder after copying.
 - Example: The In-Situ Beamline option has a folder inside called Filters. This matches the Filters folder inside the User Files Folder. The *.oif files in that folder need to end up inside User Files/Filters/.

Copy files from option folder	Paste them into the user files folder
<p>You must do this for every option folder you want to install</p>	<p>If you paste a folder that already exists, it should automatically "merge" the two folders.</p>
	

- In Origin, open the script window with: Window > Script Window

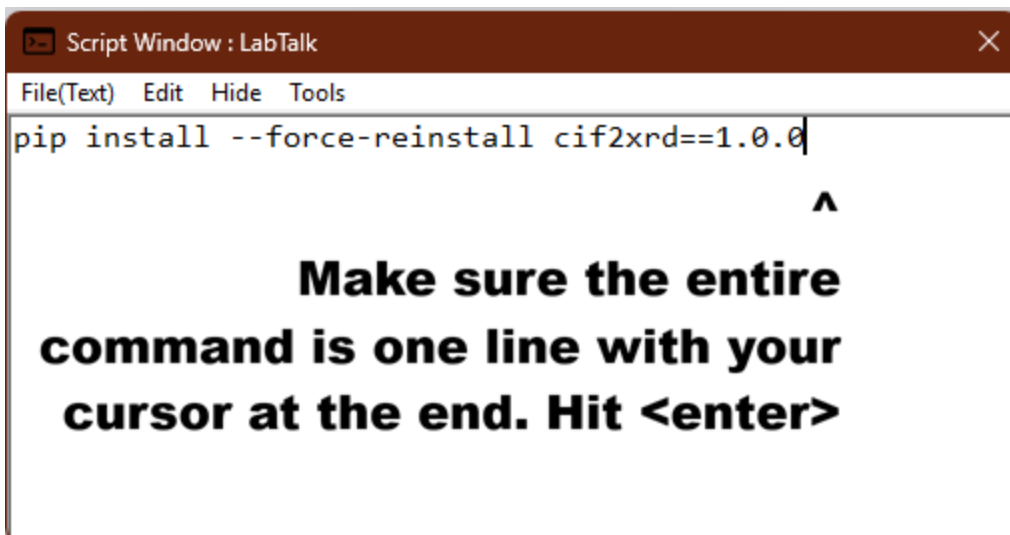


1. Copy/Paste the ENTIRE command below as one line into the script window:

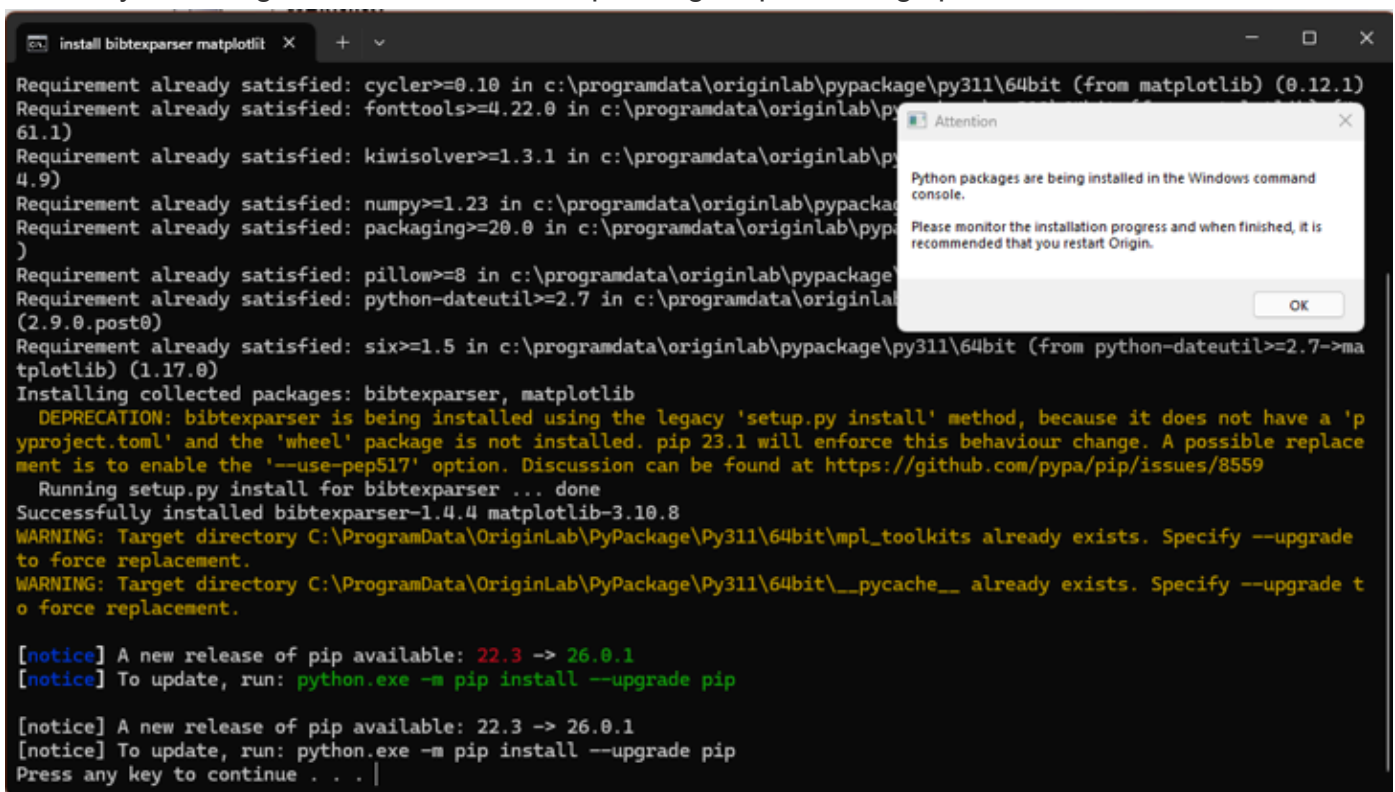
```
pip install --force-reinstall cif2xrd==1.0.0
```

2. Ensure that your text cursor is at the end of the pasted line (not on a new line) and press <Enter>

i. Make sure the version number matches the command above, not the screenshot below



1. Origin will open an embedded command prompt window to install necessary python packages. This may take longer than 10 minutes, depending on processing speed and internet connection.



1. After the python packages have been installed (CMD line should end with "Press any key to continue..."), close and restart Origin with a fresh project.
2. Review the [instructions for use](#) for further guidance.